

KEY OUTCOMES FROM OREGON'S HEALTHY START PROGRAM 2007-2008

Healthy Start is Oregon's largest child abuse prevention program, providing screening and referral services to 9,897 families and evidence-based intensive home visiting for 3,235 of Oregon's most at-risk families in fiscal year 2007-08. Healthy Start became a nationally accredited Healthy Families America program in June 2007. Healthy Start achieves positive outcomes for Oregon's highest risk families, including documented lower rates of child maltreatment and supporting children's readiness for school.



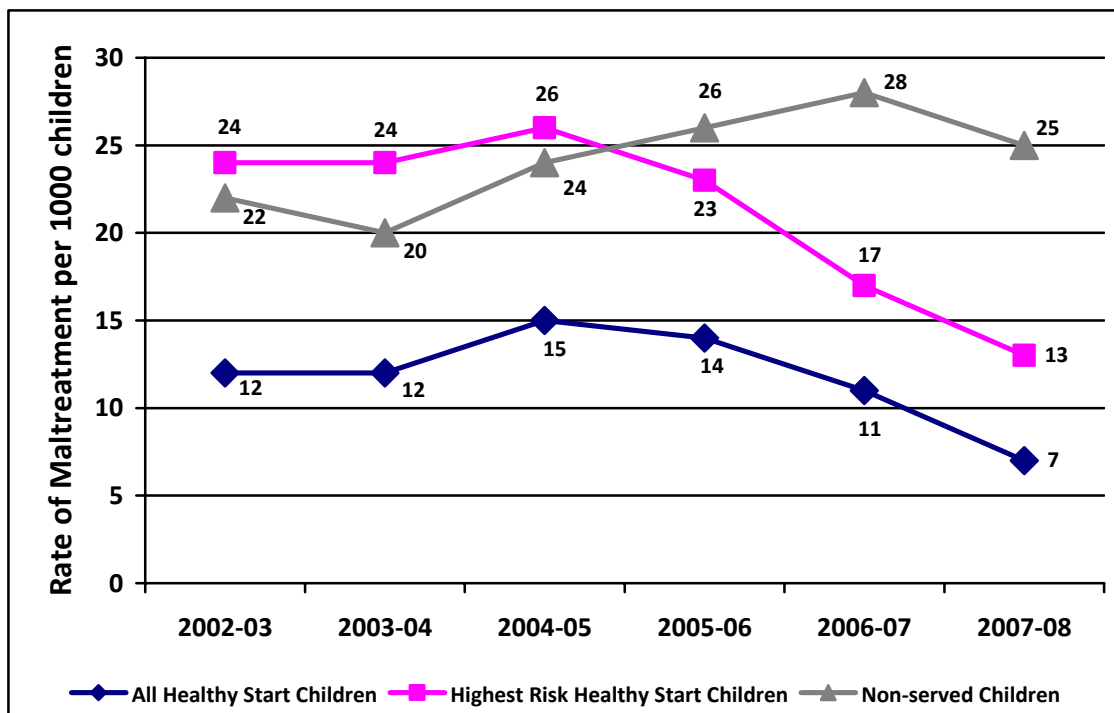
Below is a summary of key outcomes for Healthy Start families participating in home visiting services during FY 2007-08. To view the complete FY 2007-08 reports please visit www.oregon.gov/OCCF.

CHILDREN IN HEALTHY START EXPERIENCE LESS MALTREATMENT

As shown in the figure below:

- In 2007-08, the rate of substantiated abuse reports for children screened/referred or home visited by Healthy Start was **two and a half times less** than for children not in the program (7 per 1000 for all Healthy Start children vs. 25 per 1000 for non-Healthy Start children).
- The rate of child abuse for the high-risk home-visited families was **two times less** than for children not in the program (13 per 1000 for home-visited children vs. 25 per 1000 for non-Healthy Start children).
- The rate of abuse among high risk Intensive Service families has **steadily declined** since 2005-06, when the program implemented the strict research-based standards required by Healthy Families America (HFA). In 2007, HFA recognized the high quality of Healthy Start services through accreditation.

Rates of Substantiated Maltreatment Per 1,000 Children Ages 0-3, Oregon 2007-08



HEALTHY START WORKS WITH VERY HIGH RISK FAMILIES

Families in Healthy Start's Intensive Service home visiting program have an average of 3-4 serious risk factors for child maltreatment and negative child outcomes, including:

- 80% are below the Federal Poverty Level
 - 75% are single parents (compared to 35% statewide)
 - 44% have less than a high school education (compared to 20% statewide)
 - 18% are teen parents (compared to 3% statewide)
 - 42% report symptoms of depression
- Families who agree to participate in Healthy Start home visiting services have **more of these risk factors** than those who decline services.
- Families with 3 or more of these risk factors **are 13 times more likely to be maltreated.**

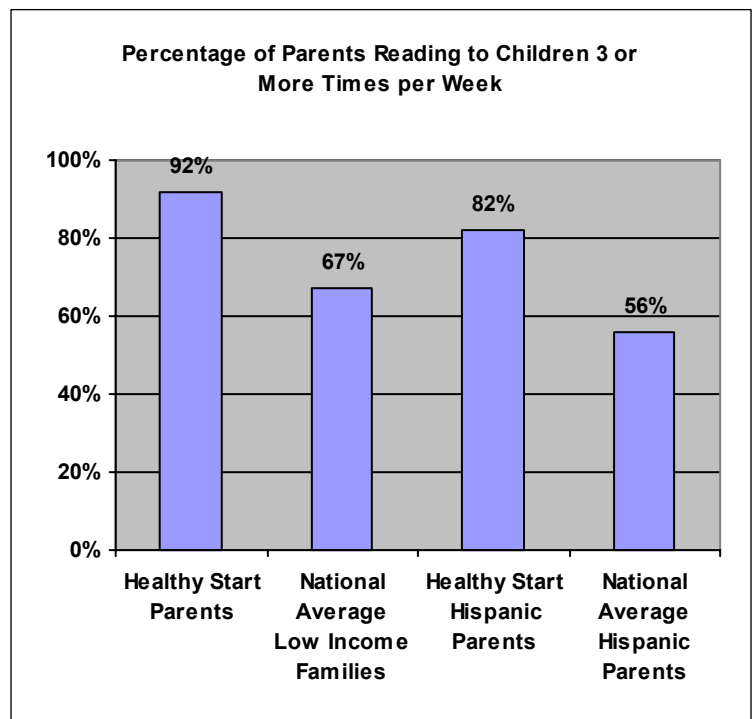
HEALTHY START REDUCES RISK FACTORS & SUPPORTS SCHOOL READINESS

Positive Parenting: After 6 months in the program:

- **More Early Literacy Support:** 92% of parents report reading regularly to their children.
- **Improved Interactions:** 85% of parents reported that they had positive, supportive interactions with their children.
- **Improved Parenting:** 79% of parents reported that they improved their parenting skills.
- **Decreased Stress:** 61% of Healthy Start parents reported a significant decrease in parenting-related stress.

Healthy Children and Families

- **Immunizations:** 93% of Healthy Start's 2-year-olds were fully immunized, compared to only 78% of all Oregon 2-year-olds (Oregon ALERT Immunization Registry, 2006).
- **Health Care Linkages: After 6 months of service:**
- 93% of Healthy Start's children were receiving regular well-child check-ups, compared to only 76% of children ages 0-5 in Oregon (National Survey of Children's Health, 2003).
 - 98% of Healthy Start's children had a primary health care provider & 95% had health insurance.



QUALITY IS KEY

- **Maltreatment rates have fallen steadily** since implementation of research-based standards required by Healthy Families America
- Statewide, Healthy Start programs met eight out of nine critical research-based Performance Standards tracked through the evaluation.